



# GAT MONTHLY MEMBERSHIP PROGRESS REPORT

Results as of: 4/30/2026

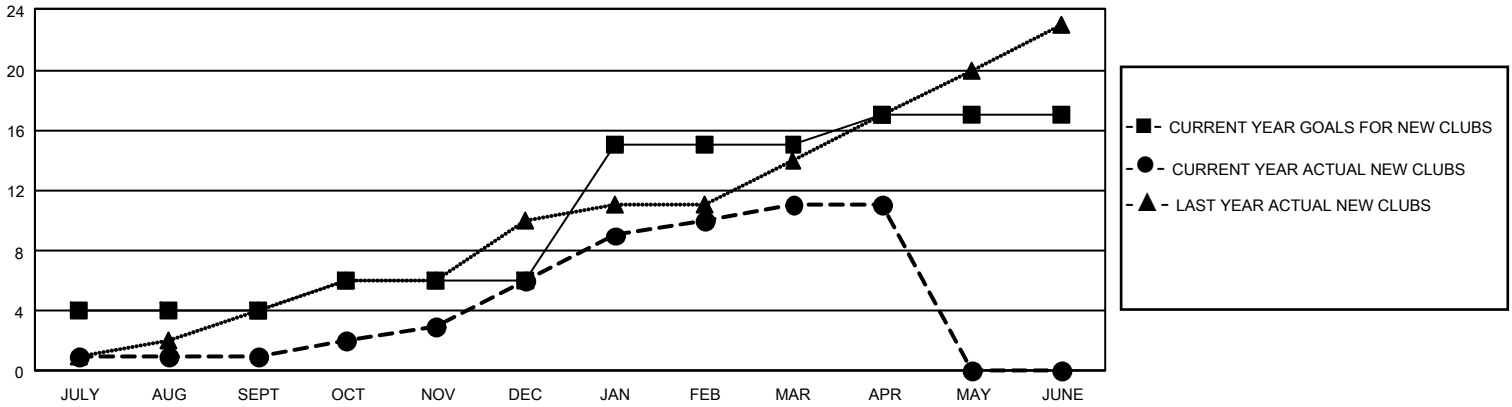
## GMT Constitutional Area 3, Group E

REPORT DOES NOT INCLUDE CLUBS IN UNDISTRICTED AREAS.

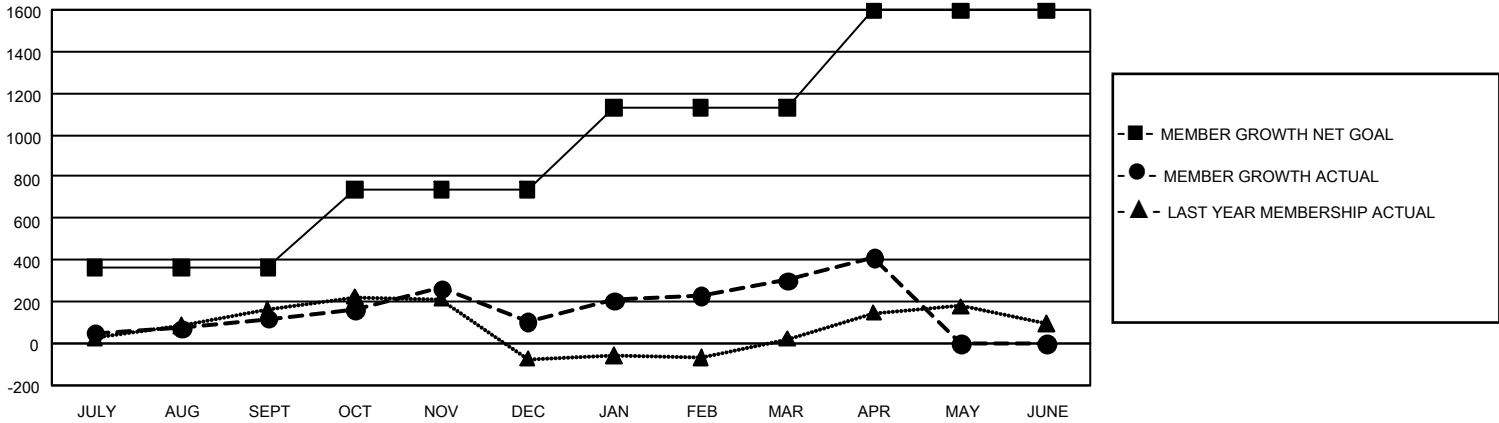
Clubs			
RESULTS FOR 2025-2026			
QUARTER	NEW CLUB GOAL	NEW CLUBS	DROPPED CLUBS
JULY/AUG/SEPT	12	1	2
OCT/NOV/DEC	6	5	1
JAN/FEB/MAR	27	5	0
APR/MAY/JUNE	6	0	0

Members			
RESULTS FOR 2025-2026			
QUARTER	MEMBER GROWTH NET GOAL	MEMBER GROWTH ACTUAL	DROPPED MEMBERS ACTUAL (including transfers)
JULY/AUG/SEPT	365	329	191
OCT/NOV/DEC	371	441	444
JAN/FEB/MAR	395	311	102
APR/MAY/JUNE	465	187	71

GOALS AND ACTUAL NEW CLUBS CUMULATIVE



GOALS AND ACTUAL MEMBERS CUMULATIVE



<b>DROPPED CLUBS: 3</b>	202 CLUBS OF 361 ADDED 1 OR MORE NEW MEMBERS	<u>GENDER DISTRIBUTION</u>	
<u>DROPPED MEMBERS</u>		MALE	3,536 (44.41%)
DECEASED	48	FEMALE	4,421 (55.52%)
CLUB CANCELLED	26	NON BINARY	2 (0.03%)
OTHER	726	PREFER NOT TO ANSWER	4 (0.05%)
<b>TOTAL</b>	<b>800</b>	TOTAL FAMILY UNIT MEMBERS	2,627
	<a href="#">CLICK HERE FOR CUMULATIVE MEMBERSHIP DATA</a>	FAMILY MEMBERS PAYING HALF DUES	1,529